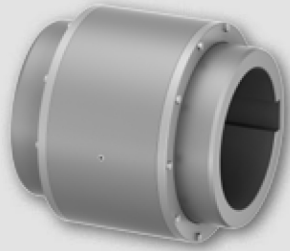
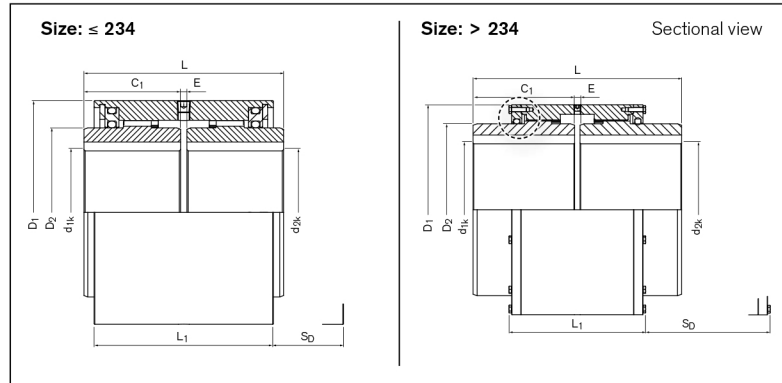
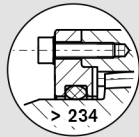


Gear Couplings TNZ ZCH

Standard hubs



> 234:
With separate
O-ring cover



Dimensions / Technical data

T_{KN} = Nom. transmissible torque
 T_{Kmax} = Max. transmissible torque of the coupling
 n_{max} = Max. rotation speed
 $d_{1kmin}; d_{2kmin}$ = Min. bore diameter d_1/d_2 with keyway acc. to DIN 6885-1
 $d_{1kmax}; d_{2kmax}$ = Max. bore diameter d_1/d_2 with keyway acc. to DIN 6885-1

D_1 = Outer diameter
 D_2 = Outer diameter hub
 C_1 = Guided length in hub bore
 E = Gap width between left and right component
 L = Total length
 L_1 = Overall length (without screws)
 S_0 = Disassembly space
 ΔK_r = Max. permissible radial misalignment

ΔK_w = Max. permissible angular misalignment
 J = Total moment of inertia
 V_{GR} = Grease volume
 GW_{sb} = Weight at smallest bore diameter

Identifier	Size	T_{KN}	T_{Kmax}	n_{max}	d_{1k}	d_{2k}	D_1	D_2	C_1
		Nm	Nm	1/min	min-max	min-max			
XC0106	69	1750	3500	6000	12 - 50	12 - 50	98	69	43
XC0108	85	2750	5500	4600	18 - 60	18 - 60	115	85	50
XC0110	107	5500	11000	4200	28 - 75	28 - 75	145	107	62
XC0113	133	8500	17000	4000	40 - 95	40 - 95	176	133	76
XC0115	152	13500	27000	3850	50 - 110	50 - 110	196	152	90
XC0117	179	22000	44000	3700	60 - 130	60 - 130	225	179	105
XC0120	209	35000	70000	3200	70 - 155	70 - 155	256	209	120
XC0123	234	43000	86000	2900	85 - 170	85 - 170	286	234	135
XC0125	254	68000	136000	2600	95 - 190	95 - 190	310	254	150
XC0127	279	82000	164000	2300	110 - 210	110 - 210	345	279	175
XC0130	305	150000	300000	2100	120 - 230	120 - 230	375	305	190
XC0135	355	195000	390000	1800	130 - 270	130 - 270	430	355	220

To continue see next page

Partner for Performance



Sale office: 22, St 11, Khang Dien Residential Area,
 Phuoc Long B Ward, District 9, HCM City

Phone: (+84) 28 2253 6631 - 6681 8587
Fax: (+84) 28 2253 6632 **Hotline:** 0903 075 395

Email: dhp_contact@dhp-corp.com.vn
Website: www.dhp-corp.com.vn



Gear Couplings **TNZ ZCH**

Identifier	Size	E	L	L ₁	S _D	ΔK _r	ΔK _w	J	V _{GR}	G _{w_{sb}}
		mm	mm	mm	mm	mm	degree	10 ⁻³ kgm ²	dm ³	kg
XC0106	69	3	89	86	91	0,42	2 x 0,5	6	0,07	4,6
XC0108	85	3	103	97	102	0,51	2 x 0,5	12	0,08	7,1
XC0110	107	3	127	112	117	0,66	2 x 0,5	36	0,13	13,6
XC0113	133	3	157	151	146	0,77	2 x 0,5	95	0,22	24,3
XC0115	152	5	185	145	150	0,99	2 x 0,5	158	0,38	33,5
XC0117	179	6	216	164	169	1,15	2 x 0,5	320	0,58	51,2
XC0120	209	6	246	180	185	1,33	2 x 0,5	615	0,75	76,1
XC0123	234	8	278	198	203	1,50	2 x 0,5	1062	1,25	104,3
XC0125	254	8	308	194	200	1,75	2 x 0,5	1551	1,92	131,7
XC0127	279	8	358	220	225	1,99	2 x 0,5	2713	2,67	185,4
XC0130	305	8	388	234	240	2,16	2 x 0,5	4071	3,33	236,6
XC0135	355	10	450	264	270	2,16	2 x 0,5	8208	5,00	368

- Examine the load capacity of the shaft-hub connection
- Hubs pilot bored, bore diameter 2 mm smaller than smallest finish bore diameter

Ordering example: **TSCHAN® TNZ ZCH**

Identifier	Size	d _{1k}	d _{2k}	Further details
XC0120	209	140	155	*

¹⁾ Without any other specification, we deliver as a standard: keyway acc. to DIN 6885-1, keyway side fit P9, bore tolerance H7; optional with set screw

Subject to technical change.

Partner for Performance



RINGFEDER POWER TRANSMISSION GMBH
Phone: +49 (0) 6078 9385-0

Sale office: 22, St 11, Khang Dien Residential Area,
Phuoc Long B Ward, District 9, HCM City

sales.international@ringfeder.com
www.ringfeder.com

Phone: (+84) 28 2253 6631 - 6681 8587
Fax: (+84) 28 2253 6632 Hotline: 0903 075 395



Email: dhp_contact@dhp-corp.com.vn
Website: www.dhp-corp.com.vn