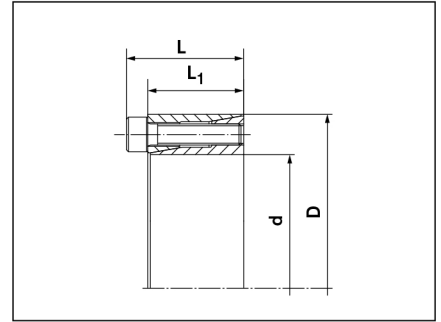
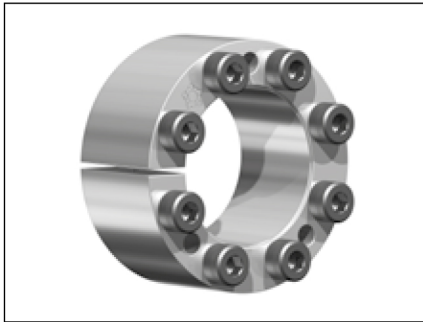


7061 ECOLOC

Locking Assemblies



Dimensions

Explanations

d = Inner diameter	T = Transmissible torque at given T_A	p_N = Surface pressure on hub at given T_A
D = Outer diameter	F_{ax} = Transmissible axial force	n_{Sc} = Quantity of screws
L = Overall length	T_A = Max. tightened torque of the clamping screws	D_G = Thread
L₁ = Overall length (without screws)	p_w = Surface pressure on shaft at given T_A	

Metric dimensions										Screws ISO 4762-12.9	
d	x	D	L	L ₁	T	F _{ax}	T _A	p _w	p _N	n _{Sc}	D _G
mm			mm		Nm	kN	Nm	N/mm ²			
6	x	16	13,5	11	6	2	1,2	150	55	3	x M 2,5
6,35	x	16	13,5	11	6	2	1,2	140	55	3	x M 2,5
7	x	17	13,5	11	8	2	1,2	125	55	3	x M 2,5
8	x	18	13,5	11	10	2,5	1,2	110	50	3	x M 2,5
9	x	20	15,5	13	15	3	1,2	120	55	4	x M 2,5
9,53	x	20	15,5	13	15	3	1,2	110	55	4	x M 2,5
10	x	20	15,5	13	15	3	1,2	110	55	4	x M 2,5
11	x	22	15,5	13	18	3	1,2	100	50	4	x M 2,5
12	x	22	15,5	13	20	3	1,2	90	50	4	x M 2,5
14	x	26	20	17	35	5	2,1	105	55	4	x M 3
15	x	28	20	17	40	5	2,1	100	50	4	x M 3
16	x	32	21	17	70	8	4,9	130	65	4	x M 4
17	x	35	25	21	75	8	4,9	120	60	4	x M 4
18	x	35	25	21	80	8	4,9	115	60	4	x M 4
19	x	35	25	21	85	8	4,9	110	60	4	x M 4
20	x	38	26	21	150	15	9,7	140	75	4	x M 5
22	x	40	26	21	160	14	9,7	130	70	4	x M 5
24	x	47	32	26	250	20	17	140	75	4	x M 6
25	x	47	32	26	260	20	17	135	75	4	x M 6
25,40	x	47	32	26	265	20	17	130	75	4	x M 6
28	x	50	32	26	440	30	17	185	100	6	x M 6
30	x	55	32	26	470	30	17	175	95	6	x M 6
32	x	55	32	26	500	30	17	165	95	6	x M 6
35	x	60	37	29	730	40	17	165	95	8	x M 6
38	x	65	37	29	800	40	17	155	90	8	x M 6
40	x	65	37	29	840	40	17	145	90	8	x M 6
42	x	75	44	36	1.200	55	41	165	90	6	x M 8

Material: Steel

To continue see next Page

Locking Assemblies

7061 ECOLOC

Metric dimensions					T	F _{ax}	T _A	P _W	P _N	Screws ISO 4762-12.9		
d	x	D	L	L ₁						n _{Sc}	D _G	
mm			mm		Nm	kN	Nm	N/mm ²				
45	x	75	44	36	1.300	55	41	155	90	6	x M 8	
48	x	80	44	36	1.850	75	41	195	115	8	x M 8	
50	x	80	44	36	1.900	75	41	185	115	8	x M 8	

Material: Steel

More sizes on request

Ordering example:

Type	d x D
7061 ECOLOC	6 x 16

Technical Information
■ Surface finishes

For shafts and hub bores

R_a = 1,6 μm
■ Tolerances

 We recommend the following mounting tolerances
Shaft: h8 · Hub: H8

Subject to technical changes.

 RINGFEDER POWER TRANSMISSION GMBH · Phone: +49 (0) 6078 9385-0 · sales.international@ringfeder.com · www.ecoloc.com